

Serious Youth Violence

Developing Health and Independence

Project 28



January 2021 – present...

- ✓ Detached Youth work in BANES (Bath, Keynsham, Midsomer Norton)
- ✓ Diversionary activities for targeted youth groups
- ✓ Knife Crime workshops and training for young people, professionals and parents
- ✓ One-to-one support
- ✓ Resources for interventions



Detached Youth Work

In partnership with YCSW



Developing Health
& Independence



Detached Youth Work

- **Aims:**

- To deliver detached session in BANES by identifying at risk areas where young people are involved in serious youth violence such as: knife crime, gang violence, sexual exploitation, domestic violence, anti-social behaviour, county lines and drugs & alcohol misuse.

- **Build meaningful relationships**
- **Bridge the gap between young people and professionals**
- **Offer support/referrals to services**
- **Communicate concerns with external agencies whilst maintaining confidentiality**
- **Visit hotspot areas through police intelligence**

Partnerships

Project 28 - Specialised in drugs and alcohol work and serious violence



YCSW – General youth work



Working together



PROJECT 28



- Joint policy and procedures
- Risk assessments
- Joint training
- Sharing information
- Follow ups/Debriefs
- 'HAF' activities



Case Study A:

A referral was received from social services for a young male, aged 16. He had been drinking and was suffering with his mental health. He may have also been caught up in dealing drugs. He would never attend his Project 28 appointments until we started our joint work with YCSW. I was able to build up a relationship with him during these sessions as he began to trust me. I was able to encourage him to attend one to one sessions, which he openly said he struggled with. He told me that if it wasn't for constantly seeing us on outreach he would have never come to those one to ones. One day he called me and told me that he needed to meet me. He said the night before he had been set up and robbed by someone from London who he was being exploited by. I was able to involve social care, Lou Gould and the police to safeguard him and his family. He is now working a full time job and is not involved in that life anymore.

Case study B:

CSE and CCE concerns in Bath City Centre



- Prior knowledge on hotspot and concerns
- Collected phone numbers and contacted to offer support
- Informed DSL at Project 28 and YCSW
- Reported incident to 101 (maintaining confidentiality of suspected victims)
- Provided follow up information to external agencies
- Monitored the same area for weeks after

Common issues dealt with on detached

- Fights
- Intoxication
- ASB
- Mental health concerns
- Dealing
- Exploitation (CSE/CCE)



2021 statistics

Quarter	Months	Total YP's seen
1	Jan-March	470
2	April-Jun	1234
3	Jul-Sept	1399
4	Oct-Dec	669

TOTAL: 3772 young people



Testimonials

Young person A:

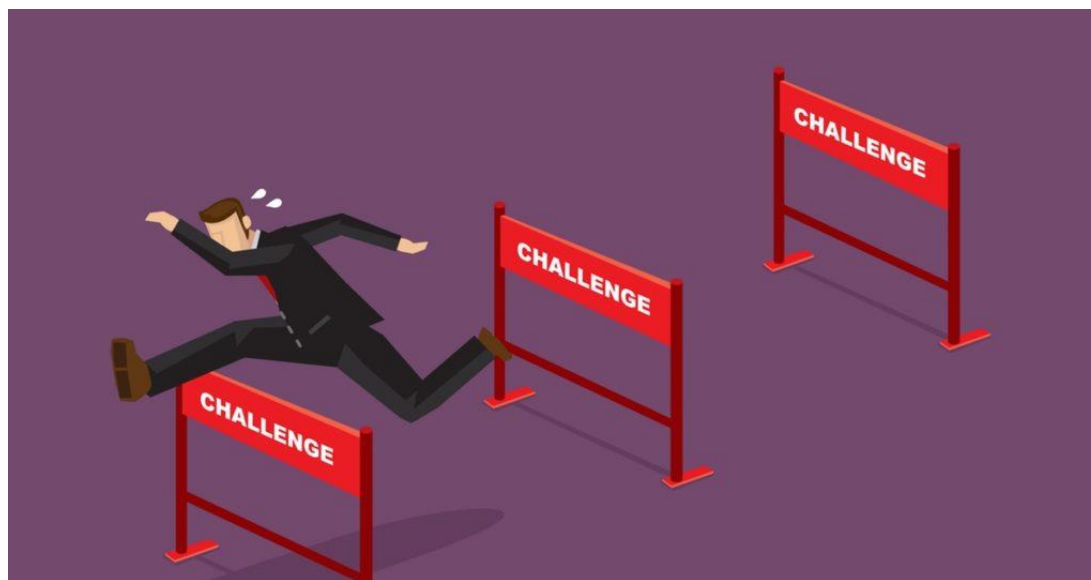


Young person B:



Challenges

- Not seeing any young people
- Young people not wanting to speak to us
- Aggression and inappropriate behaviour
- Incidents and safeguarding



Sustainability

- Why we need this work to continue...

'If you weren't there that Friday to help me, I'd probably still be trapping now.'





Diversions Activities

In partnership with YCSW



Developing Health
& Independence

Diversiónary Activities

- **Aims:**

- To provide activities to a targeted group of young people at risk of serious violence (victims or perpetrators). These individuals have already been identified through relationships made on detached and the activity was requested by young people.

- **Build meaningful relationships**
- **Bridge the gap between young people and professionals**
- **Offer support/referrals to services**
- **Increase self-worth and confidence**
- **Build resilience**
- **Promote hobbies and interests**
- **Offer young people a voice**



Graffiti Project



Selecting the young people

2 groups

Group 1: Victims (weeks 1-2)

Group 2: Potential perpetrators (weeks 3-4)

Invited all young people to attend at a popular location where we usually see lots of YPs on their allocated day.

Some were pre-existing clients at Project 28, although this wasn't a requirement.



A place to be heard...

We were able to have conversations around the following:

- Serious violence
- Victimisation and bullying
- Safety in and around the Bath area
- Weapon carrying and the risks

- Substance misuse
- Alcohol
- University and staying safe



Testimonial





Knife Crime Workshops and Training

Delivered to Students, Professionals and Parents



DHI Developing Health
& Independence

Knife Crime Workshops and Training

- **Aims:**

- To offer free training workshops to students, professionals and parents to **raise awareness** of knife crime and **prevent involvement** with serious violence. This will cover awareness raising regarding **knife crime, associated risk factors** and the importance of **skills building interventions** to increase **resilience** to avoid involvement in knife crime.

- **Students workshops**
- **Professionals training**
- **Parents training**
- **School assemblies (in partnership with PCSO Hollie Simpson)**
- **One-to-one interventions**

Interventions: January – December 2021

- Total of 19 workshops = **188 students**
- Total of 21 training days = **143 professionals**
- Total of 2 workshops = **7 parents**

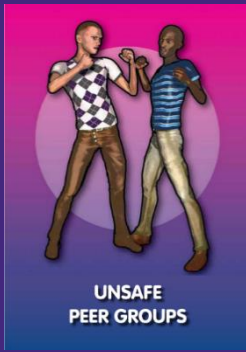
- Total of 5 assemblies = **864 students**
- One-to-one interventions = **20 clients**



Testimonial – SYV one-to-one



“ I’ve found the knife crime support very useful. I’ve enjoyed meeting up with my worker to learn how to make positive changes to my life.”



Resources

Knife crime interventions



Developing Health
& Independence

Resources

- **Aims:**

- To provide a set of activities and visual resources to aid the education in serious violence and knife crime. Used as part of a set intervention for targeted individuals participating in a one-to-one or group session.

- **Address different learning styles**
- **Promote learning**
- **Consistent intervention**
- **Brief or long term interventions**



Your Pack...



- ✓ Knife crime workbook
- ✓ Risk scale
- ✓ Worry tree
- ✓ 'What if' cards
- ✓ Consequences cards

Knife crime workbook

Activities and Worksheets

Knife Crime Resources

Developing Health & Independence
Project 28 - Serious Violence

Tel: 01225 463344
www.dhi-online.org.uk

Contents

Risk scale – what are the risks?	4
Knife crime quiz – Agree or disagree?	6
Knife crime quiz – True or false?	7
Gang profile	8
Kyle's story	10
'What if' flashcards	13
Values	16
Violent language	17
No knives vs Knives	18
Circle of peace	20
Resolving conflict	21
Conflict in the community	22
Living peacefully	23
Behavioural risks	24
Worry tree	27
True stories	29
Asking for help	31
Help cards	32

Knife Crime Quiz!

Agree or disagree?

Most of these statements do not have a correct answer. Use these for interesting points of discussion.

1. An argument would get out of control quickly if someone had a knife
2. It will be harder for a person to achieve their goals and ambitions if they are involved in knife crime
3. Is there any valid reason to carry a knife
4. A person will carry around a lot of guilt if they have seen or been part of an attack
5. If someone's friend carries a knife that person may stop hanging around with them
6. A person's friends and family would be really disappointed and upset if they get arrested
7. People who carry a knife often have, an increased feeling of danger, fear and stress
8. People who have survived knife incidents are often left with permanent life-changing trauma

Knife Crime Quiz!

True or False?

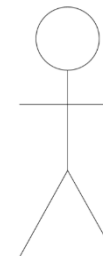
1. A person can get up to one year in prison for carrying a knife
2. A person could end up in hospital if attacked by a knife
3. A person can get a criminal record for carrying a knife
4. A person can die from a knife attack
5. A person who uses a knife to attack someone can get a life sentence of 25 years in prison
6. It will be harder to get into college, university, a job or even travel to different countries with a criminal record
7. 87% of young people aged 10-19 don't carry a knife. True or false?
8. People under the age of 18 are allowed to buy cutlery knives (knife and fork). True or false?
9. A person who carries a knife could have it used against them
10. If someone took a knife into school, it's the teachers who will deal with it
11. If a group of friends were with someone who uses a knife to hurt somebody, they will get into trouble too.
12. Countries like America and Canada may not allow someone with a criminal record into their country, even just to go on holiday.

Answers	7. False, 99% of young people do not carry knives	10. False, the police would be called immediately
1. True	8. False, it's illegal the same punishment. This is known as "joint enterprise"	11. True, they could all face the same punishment
2. True	9. True, you are more likely to be hurt by your own knife	12. True
3. True		
4. True		
5. True		
6. True		

Gang Profile

TASK: Create a gang member. Think about what they physically look like, what clothes they wear, how they speak. Also consider emotional qualities, what they might be thinking, what their future looks like and what impression they give off.

Name:
Age:
Gender:



Hints!

- What are they wearing?
- How do they speak?
- Do they go to school or work?
- What might their future look like?
- What impression do they give off – Good? Bad?
- How might they feel?
- What are their relationships with others like?
- What do others think of them?



Developing Health & Independence

Risk Scale

AIMS:

- Initiate conversation
- Challenge
- Present questions

What are the risks?

Where would you put these statements on the 'Risk Scale'?

"I've started hanging out with a new group of friends"

Low

Moderate

High

Very High

"I'm getting bullied and someone threatened to stab me"

Low

Moderate

High

Very High

"My friend showed me a knife during break time"

Low

Moderate

High

Very High

"My dad gave me a pen knife for my 15th birthday"

Low

Moderate

High

Very High

"I've joined a group of older mates, I really want to fit in"

Low

Moderate

High

Very High

"I carry a knife to feel safe"

Low

Moderate

High

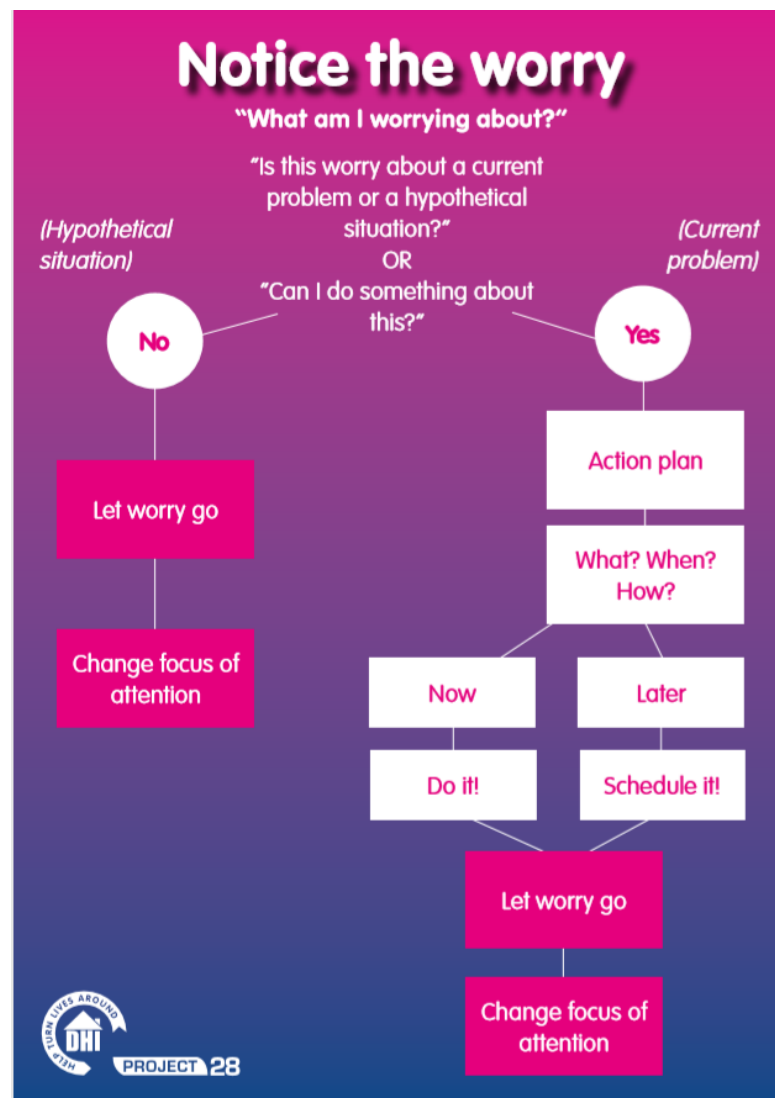
Very High



Worry Tree

AIMS:

- Break down thoughts
- Reduce anxiety
- Encourage productivity



'What If' cards



WHAT IF...

Your friend showed you they had a knife in their bag at school

Ideas

- You wouldn't say anything
- You would tell a teacher
- You would tell your friend they shouldn't have it

• How would you feel? Scared/Worried/Angry/Funny?

WHAT IF...

You were worried about who your brother/sister/cousin were hanging out with

Ideas

- You would speak to them
- You would tell someone you trust
- You wouldn't say anything
- You will let them make their own mistakes

• How would you feel? Scared/Worried/Angry/Funny?

WHAT IF...

You took a knife from home to the park with you and a fight broke out

Ideas

- You would flash it to scare the other person
- You would keep it hidden
- You would go home straight away

• How would you feel? Scared/Worried/Angry/Funny?

WHAT IF...

Someone you respected asked you to use a knife to threaten someone

Ideas

- You would say no
- You would stop being friends with them
- You would do it, it's only to threaten someone

• How would you feel? Scared/Worried/Angry/Funny?

WHAT IF...

The knife you brought with you was used against you?

Ideas

- You would regret bringing it out with you
- You didn't expect that to happen

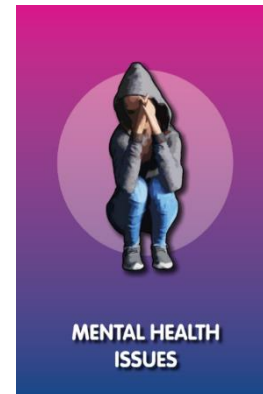
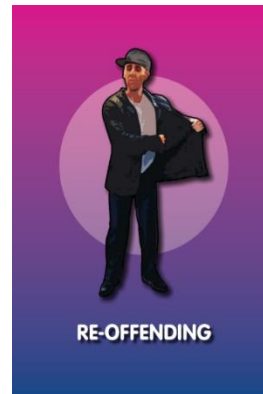
• How would you feel? Scared/worried/angry/funny?

Consequence cards



Storyboard

Least risky - Most risky



What happens next?

- Where do we go from here after March?
- What were the values of organisations working together?



Any other questions?...