

If you are concerned about a child/young person you can email from a secure email account to the secure email address CSE.Referrals@BATHNES.GCSX.GOV.UK

If you are concerned about a child please call Social Care Duty team on 01225 396313 or if you would like to remain anonymous please call Crimestoppers on 0800 555 111

If you would like more information about CSE and the work in B&NES please go to: www.bathnes.gov.uk

There are services that can offer support:

Willow Project – The Willow project is a service that offers young people at risk of Child Sexual Exploitation support. The Willow Project will work with young people one to one to raise awareness and reduce risk. This is a service for young people who are vulnerable and at risk but NOT being exploited.

BASE – Barnardo's Against Sexual Exploitation – BASE is a service commissioned by Bath & North East Somerset from Barnardo's. BASE offers young people intensive one to one support if they are being exploited.

For more information please email the address above

This publication can be made available in a range of community languages, large print, Braille, on tape, electronic and accessible formats from People & Communities Information Officer on 01225 477983 or email information_officer@bathnes.gov.uk

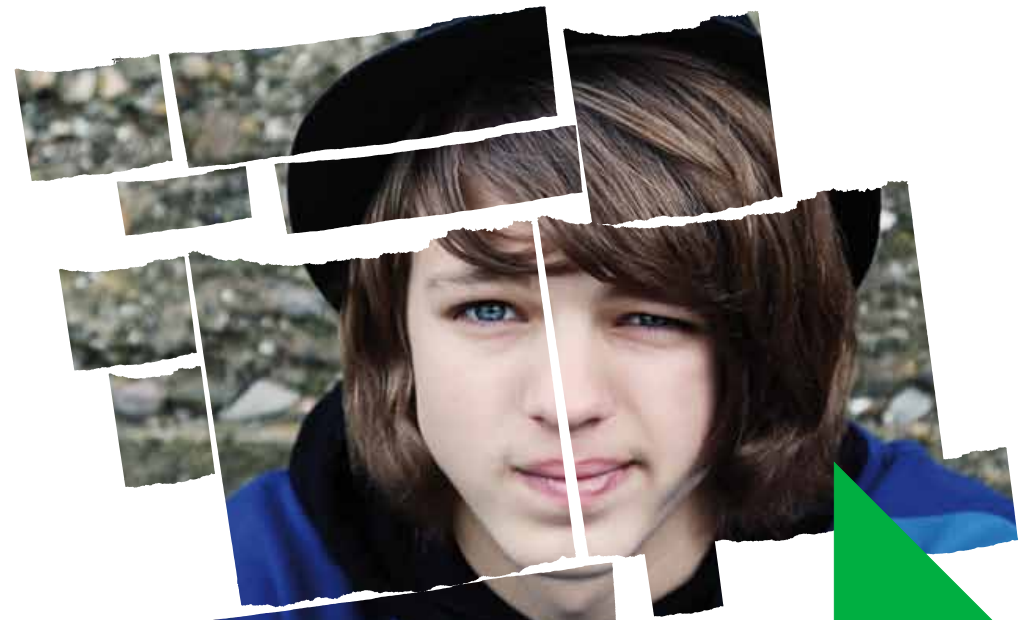
75% recycled
When you have finished with this item please recycle it

Prepared by Bath & North East Somerset Council's People & Communities and published by Bath & North East Somerset Council's Print Services, Dartmouth Avenue, Oldfield Park, Bath BA2 1AS

DP 5722 08/16 JM

**Bath & North East
Somerset Council**

Child Sexual Exploitation



Leaflet for professionals

What is Child Sexual Exploitation (CSE)?

Someone taking advantage of you sexually, for their own benefit. Through threats, bribes, violence, humiliation, or by telling you that they love you, they will have the power to get you to do sexual things for their own, or other people's benefit or enjoyment (including: touching or kissing private parts, sex, taking sexual photos)

The young person may think that their abuser is their friend, or even a boyfriend or girlfriend. But they will put them into dangerous situations, forcing the young person to do things they don't want to do. The abuser may physically or verbally threaten the young person or be violent towards them. They will control and manipulate them, and try to isolate them from friends and family. *(quote from a young person)*

Who does it affect?

This type of abuse could happen to any young person from any background. It happens to boys and young men as well as girls and young women. The victims of abuse are not at fault. Abusers are very clever in the way they manipulate and take advantage of the young people they abuse

Bath & North East Somerset Council is working to address the impact of child sexual exploitation.

Reference Documents for Child Sexual Exploitation:

CSE Strategy & CSE Protocol <http://www.bathnes.gov.uk/services/children-young-people-and-families/child-protection/local-safeguarding-children-board>

Or internal link is <http://intranet/child-sexual-exploitation-cse-0>

Willow Project – a service to support children and young people at risk of CSE (see page 3)

BASE – a service supporting children and young people being sexual exploited (see page 3)

What to do if you are concerned you are working with a child at risk of or being sexually exploited:

